

LAKESESIDE

Delight

This dream cottage sits easy
on the shores of Gray's Bay

PHOTOS BY BY JIM KRUGER,
LANDMARK PHOTOGRAPHY



This charming cedar-shingle and Fond du Lac stone cottage on Lake Minnetonka's Gray's Bay offers the homeowners, a family of four with two teenage daughters, the best of both worlds: easy access to the city and all the pleasures of lake living just outside the door. The informally elegant main floor features 10-foot ceilings, custom millwork, and dark-stained Brazilian cherry floors. And, of course, the dazzling panorama of the bay. "There are lake views from every room on the main floor," says Sven Gustafson, president of Stonewood, LLC, designer and builder of the home.

The 6,621-square-foot home replaces a 1950s house—known in the neighborhood as "the pizza parlor" for its boxy clumsiness. "The old house was oriented to the street. It didn't capture the property at all," says Gustafson. "This

is a wonderful switch." Its careful design considerations include front and rear stairways, a tiled mudroom and gear closet, a large pantry with windows to the front of the house, a sizable "mom office," and a cedar-lined screen porch with wood-burning fireplace, fridge, and prep area. Likewise, the private areas on the second floor are elegantly designed and appointed. The owners' suite at the top of the front stairs offers a magnificent view of the lake and treetops and features a V-groove-paneled ceiling and a vault that lifts to 10 feet. The two girls have enviable spaces as well, with the 15-year-old in a double suite with pocket doors to separate what could be two bedrooms, and the 17-year-old in a large suite with a white tête-à-tête sofa tucked beneath the eyebrow window. All in all, this is a lake home that has it all. —C.L.

THIS PAGE This home was designed to showcase its peerless site on Gray's Bay. The view from the kitchen island takes in the water, as well as the glass-encircled informal dining area and creamy enameled coffered ceiling with inset cove molding.

OPPOSITE PAGE The kitchen's high-contrast style comes from its cream, brown, and black granite countertops atop dark-stained alder cabinetry and Brazilian cherry flooring. The creamy porcelain-tile backsplash gets a kick from metal accents. Double dishwasher drawers, a built-in coffee maker, and an adjoining pantry with honed granite countertops finish off this kitchen's conveniences.

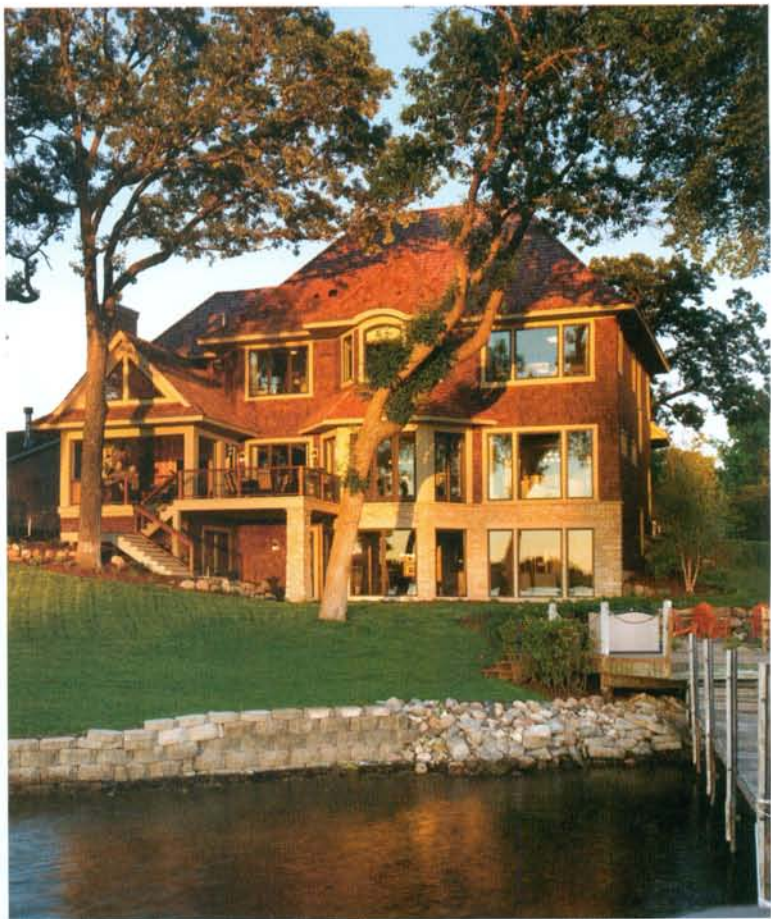


THIS PAGE, RIGHT This 6,621-square-foot Minnetonka home is designed to make the most of its enviable location on Lake Minnetonka's Gray's Bay. The windows in nearly every room are oriented to the water. The cedar-lined screened porch ensures delightful evenings spent overlooking the water, mosquito season or not.

BELOW The wood-lined living room/library shows off its elegant demeanor. Dark-stained alder bookshelves, a coffered and paneled ceiling, and deep Brazilian cherry floors make it a tranquil gathering spot.

OPPOSITE PAGE, TOP The owners' bedroom at the top of the stairs offers a lovely view of the lake and treetops, as well as a ceiling with V-groove panel and vault that lifts to 10 feet.

BOTTOM The to-die-for owners' bath boasts separate his-and-her vanities with granite countertops, shower with sliced pebble floor, and a luxurious freestanding slipper tub beneath an arched window overlooking the water.





BUILDER
STONEWOOD, LLC

HOME LOCATION
Minnetonka

SUPPLIERS
Borgert Products, Inc.
Cartier Lighting and Home
Martha O'Hara Interiors
Marvin Windows and Doors
Orion Home Systems, LLC
Phantom Screens
Pipeline Supply

FOR MORE INFORMATION ON FEATURED
PRODUCTS AND SUPPLIERS, SEE PAGE 113.